

EQSS Model6253 – OverWatch™ Genie SmartLink GS-E With Outriggers



**** Failure to follow this installation manual will void warranty ****



EQUIPMENT SAFETY SYSTEMS
75 Naxos Way, Keysborough 3173 Victoria Australia
P: +61 3 8770 6555 E: support@eqss.com.au

**Genie SmartLink GS-E With
Outriggers
Installation Manual**

REV 1.4

28/11/2023

Model6253 OverWatch™ Installation Manual

Document # DO001519

AUTHORS:
Kieren Grogan

AUTHORISED BY:
Kieren Grogan

CHECKED BY:
Andrew Donegan

DOCUMENT ABSTRACT:

This Installation Manual details the manufacturer's installation instructions for installing the Model6253 OverWatch™ on a Genie Smartlink GS-E Series electric slab scissor lift with outriggers.

PRODUCT NAME:

Model6253 OverWatch™ Operator Detection System

REFERENCE DOCUMENTS:

DO0001195 Model6253 OverWatch™ User Manual

CURRENT DOCUMENT REVISION:

1.4

REVISION INFORMATION:

- 1.0 Initial Document Creation for installation on a Genie GS-E Series control box with outrigger functionality
- 1.1 Update of installation manual and instructions for plug and play installation.
- 1.2 Update of PCB image with highlights on Horn pins.
- 1.3 inclusion of operator sensor guard V2 mounting requirements
- 1.4 Update to model configuration instructions



Important Information

Information contained in this publication regarding this device's applications and the like, is provided only for your convenience and may be superseded by updates. It is your responsibility to ensure that the application or our equipment meets with your specifications.

EQUIPMENT SAFETY SYSTEMS MAKE NO REPRESENTATIONS OR WARRANTIES OF ANY KIND, WHETHER EXPRESSED OR IMPLIED, WRITTEN OR ORAL, STATUTORY OR OTHERWISE, RELATED TO THE INFORMATION, INCLUDING, BUT NOT LIMITED TO, IT'S CONDITION, QUALITY, PERFORMANCE, MERCHANTABILITY OR FITNESS FOR PURPOSE.

Equipment Safety Systems disclaims all liability arising from this information and its use. Use of Equipment Safety Systems' products as critical components in life support systems is not authorised except with express written approval by Equipment Safety Systems. No licenses are conveyed, implicitly or otherwise, under any Equipment Safety Systems intellectual property rights.



N23041

This is a class A product certified to AS/NZS CISPR 22:2006. In a domestic environment this product may cause radio interference in which case the user may be required to take adequate measures.



Table of Contents

Preparation	5
Required Tools	5
Installation Time	5
Installation Instructions	6
Operator Sensor	6
Control Module	9
Post Installation Configuration	17
Overview	17
Minimum system requirements	17
Wi-Fi Connection & Web Page Access	17
Machine Model Selection	18
Installation Test.....	19
Change Model Configuration	20
System Settings.....	21
Default Parameters	21
Polarity and Input Style.....	22
Harness Drawing AS002240	23
Replacement Parts.....	24

Preparation

Required Tools

The OverWatch has been designed to be fitted using basic workshop tools. Shown below is a list of tools required to complete the installation.

Item	Tool / Description
1	Electric Drill
2	Centre punch
3	Hammer
4	Side Cutters
5	Drill 5.0mm
6	Drill 6.0mm
7	Step Drill (5 – 30mm)
8	Metric sockets or spanners
9	Needle nose pliers
10	Screw drivers


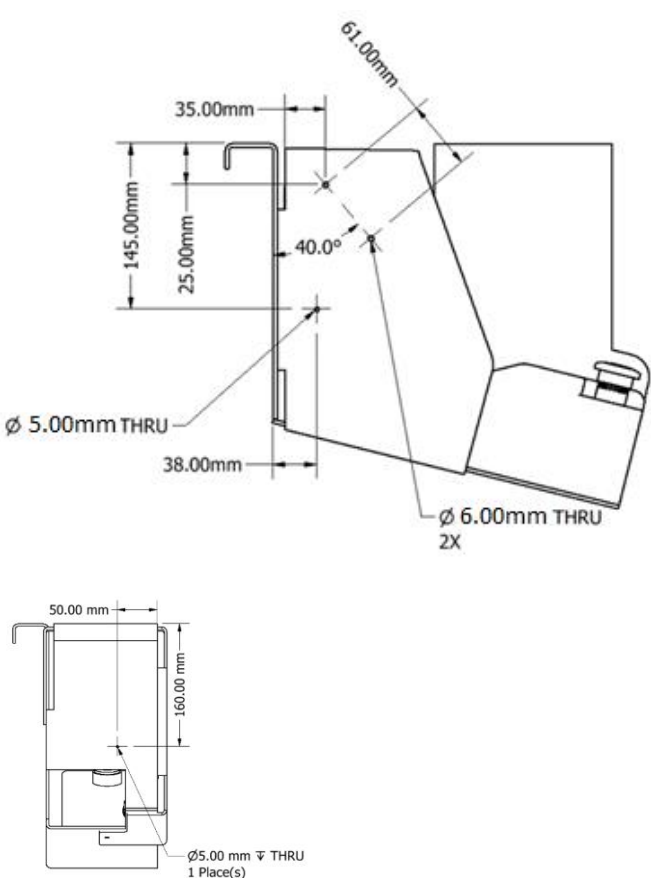
Installation Time

The suggested time required to install the OverWatch on the Genie GS-E is as detailed below.

Task	Estimated Time (Minutes)
Drilling of all mounting holes for the various components	10
Mechanical assembly	5
Electrical assembly	10
Post installation system tests	10
Total	35

Installation Instructions

Operator Sensor

Step	Description	Diagram
1.	Remove the joystick controller from the metal housing.	
2.	<p>Drill two 6.0mm holes to mount the operator sensor in the position shown in the diagram. The sensor should be mounted at an angle of 40 degrees from the vertical.</p> <p>Drill two 5.0mm holes for the P-Clip installation at the side and rear of the controller box as shown in the image.</p>	 <p>Technical drawing showing the mounting dimensions for the operator sensor. The main view shows a 40.0° angle from the vertical, with dimensions: 35.00mm, 61.00mm, 145.00mm, 25.00mm, 38.00mm, and two Ø 5.00mm THRU holes. A secondary view shows a 50.00mm width and 160.00mm height with a Ø 5.00mm THRU hole.</p>

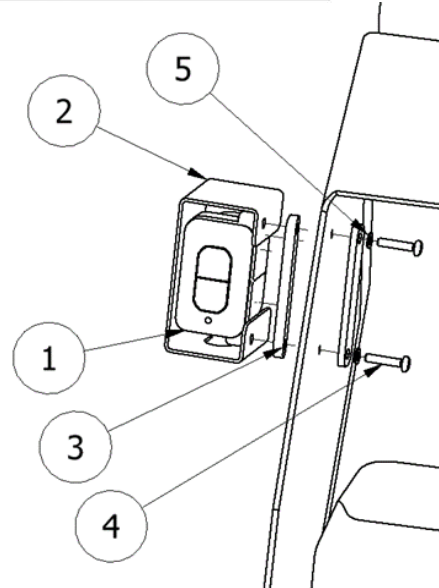
3.

Sensor Mounting Guard V1 (ME001794)

Mount the operator sensor in the **40-degree position** by using the wedges, sensor guard, bolts, and washers.

The orientation of the wedge blocks is critical for the correct positioning of the operator sensor. Make sure that the sensor is angled, such that it is **twisted outwards** from the joystick controller.

PARTS LIST			
ITEM	QTY	PART NUMBER	DESCRIPTION
1	1	AS001910	OverWatch Operator Sensor
2	1	ME001794	OverWatch Operator Sensor Guard
3	2	ME001798	Operator Sensor Alignment Wedge
4	2	FA001422	M4 x 20mm Security Screw
5	2	FA001235	M4 Plain Washer



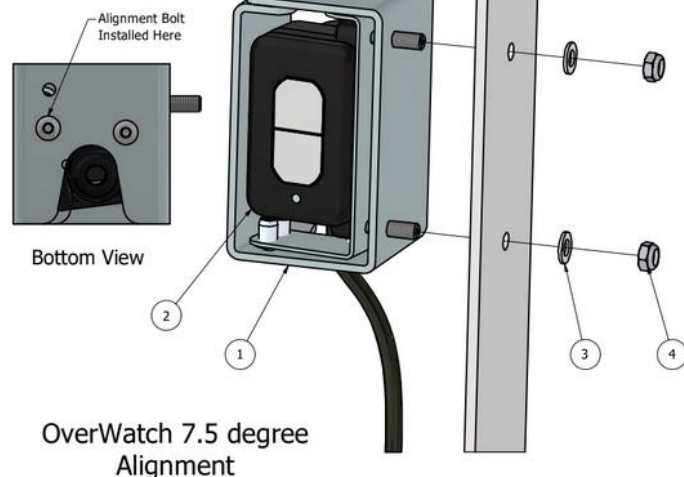
4.

Sensor Mounting Guard V2 (AS002326)

This bracket (AS002326) supersedes the original V1 design. Attach the bracket in position using the M5 nuts and washers. Make sure that the sensor is on the 7.5-degree angle, such that it is twisted outwards from the joystick controller.

The 7.5-degree twist is achieved by rotating the sensor inside the assembly and using the bolt hole as show in the image.


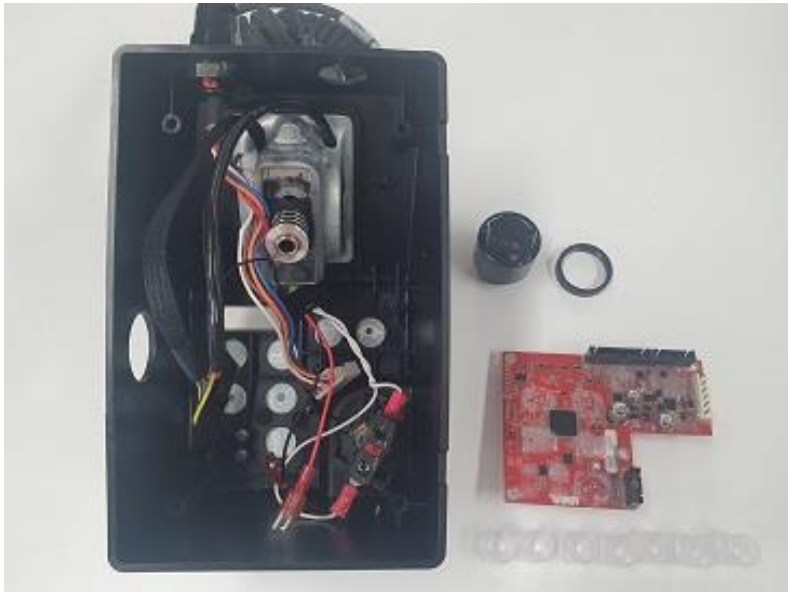
PARTS LIST			
ITEM	QTY	STOCK NUMBER	DESCRIPTION
1	1	AS002326	Sensor Mounting Guard V2
2	1	AS001910	OverWatch Operator Sensor
3	2	FA001174	Washer, Plain, M5, 304 St. St.
4	2	FA001219	Nut, Hex, M5 x 0.8mm, Nylock



5. Route the operator sensor cable as shown in the diagram. Use P-Clips to secure the cable to the metal enclosure.



Control Module

Step	Description	Diagram
1.	Remove the bottom cover from the joystick to expose the internals.	
2.	Remove the buzzer, E-Stop, and circuit board from the joystick enclosure.	

3.

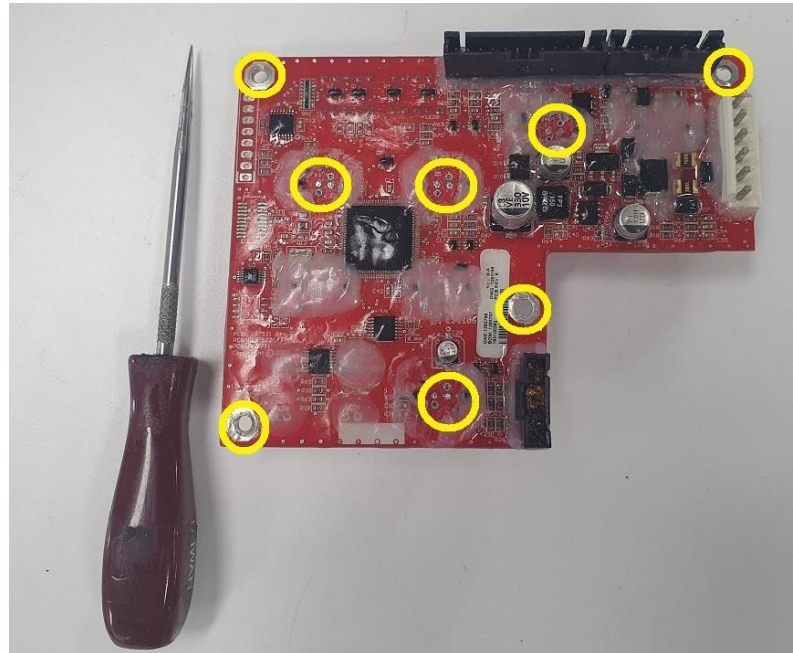
Drill a **20mm** hole to run the operator sensor M20 Gland into the plastic joystick enclosure. The position of the hole is detailed as in the image. It is recommended to use a step drill for this hole.



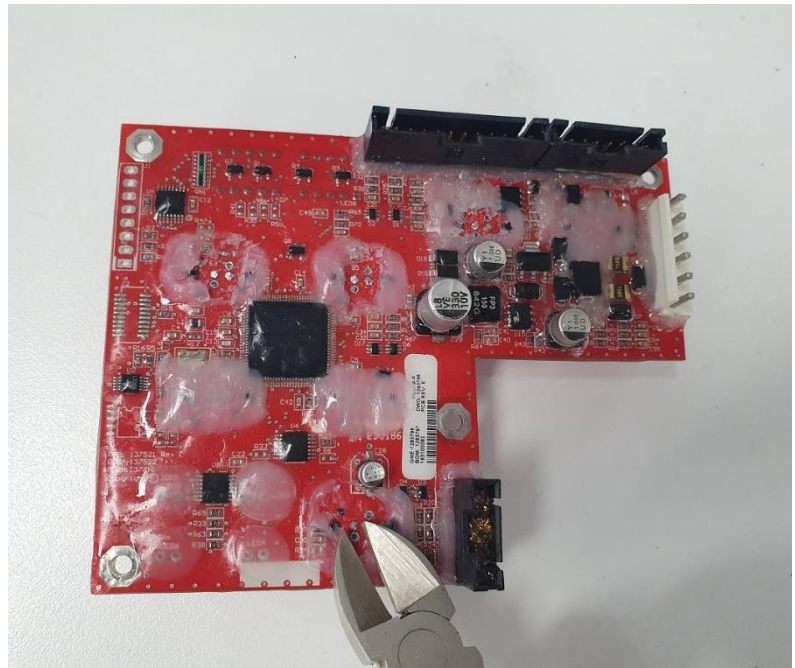
4.

Use a fine metal pick to clean the area shown in the yellow circles, on the adjacent image, to allow access to the pins and mounting holes.

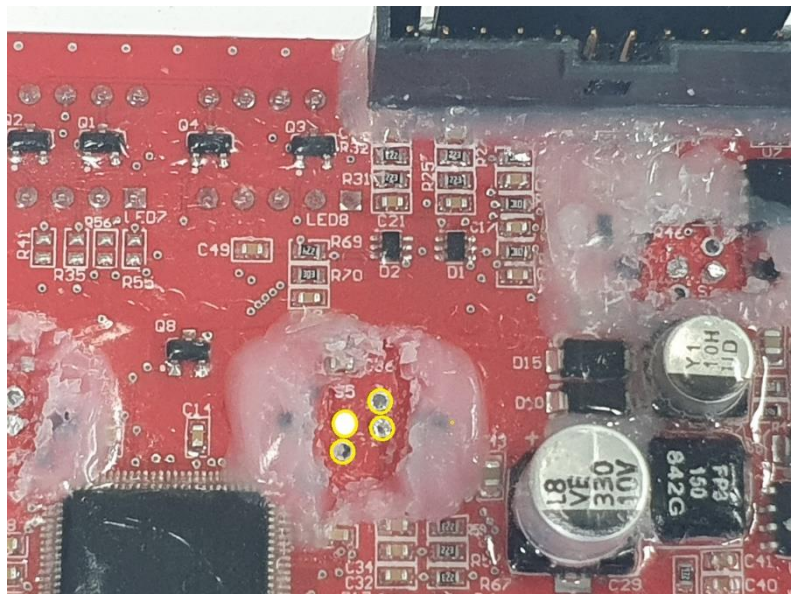
This process removes the conformal coating on the PCB and allows electrical access to the drive, elevate, horn and outrigger connections on the joystick circuit board.



5. Use a fine pair of side cutters to trim down the signal pins. These connections must be trimmed to be as flat as possible so that the spring pin from the OverWatch plug and play board can make suitable contact.

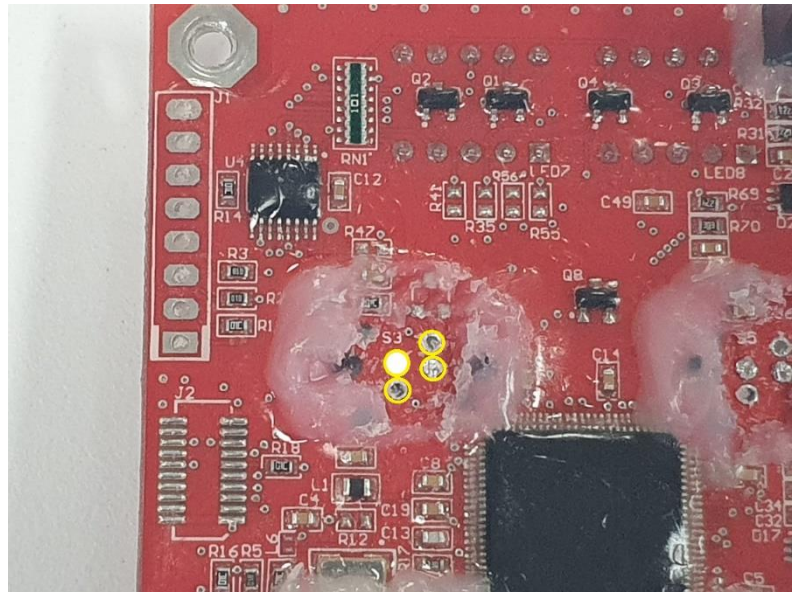


6. Trim down the **Elevate** signal pin as displayed in the image. Using a fine pair of side cutters make sure that the pin is trimmed flat.



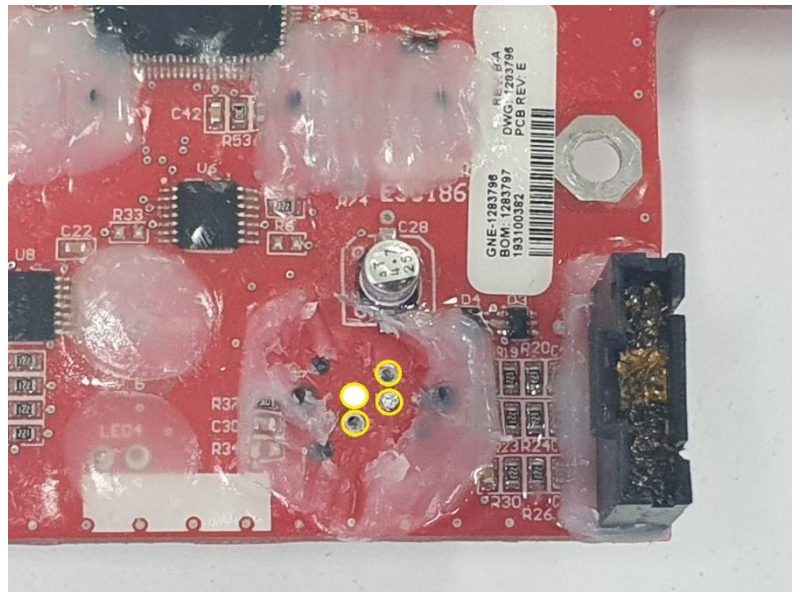
7.

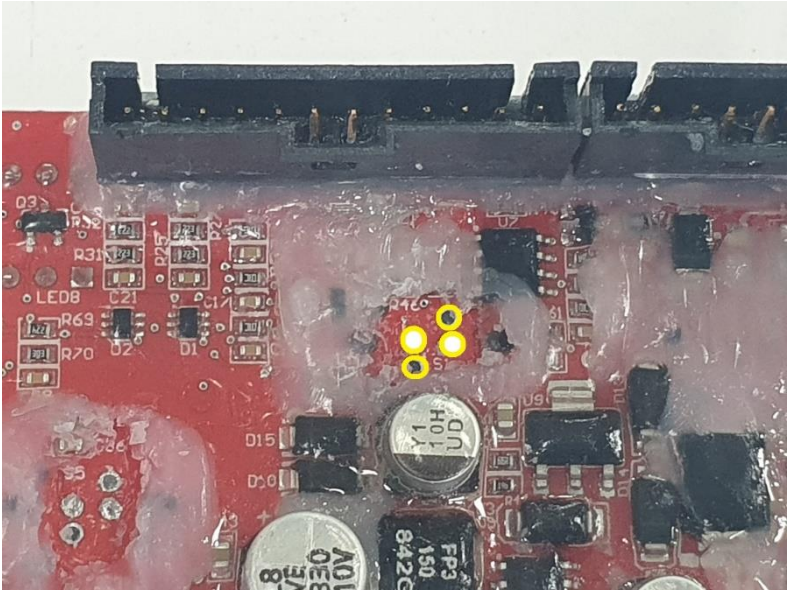
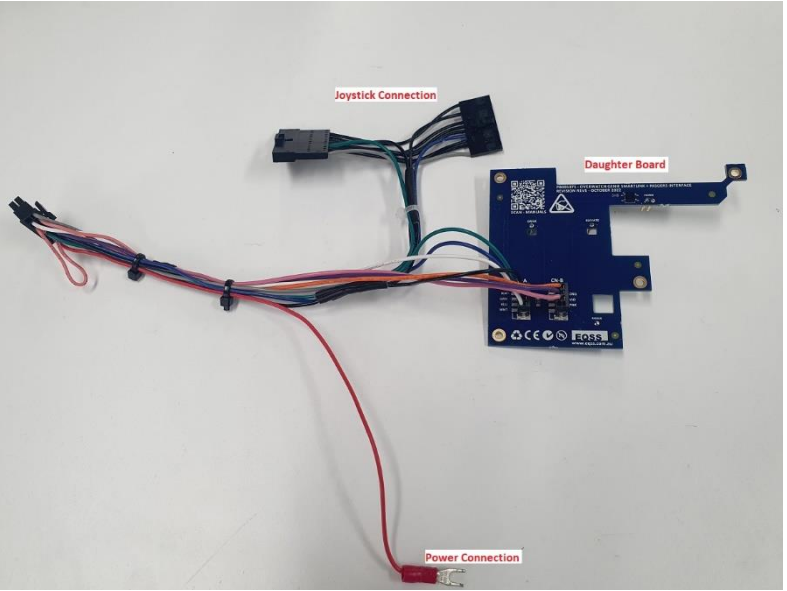
Trim down the **Drive** signal pin as displayed in the adjacent image. Using a fine pair of side cutters make sure that the pin is trimmed flat.



8.

Trim down the **Outrigger** signal pin as displayed in the adjacent image. Using a fine pair of side cutters make sure that the pin is trimmed flat.



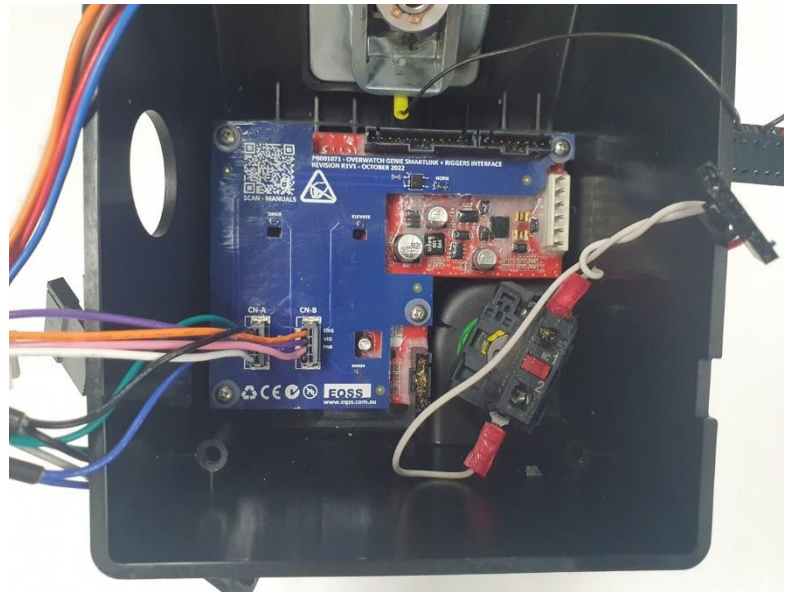
<p>9.</p>	<p>Trim down the two Horn signal pins as displayed in the adjacent image. Using a fine pair of side cutters make sure that the pins are trimmed flat.</p>	
<p>10.</p>	<p>Wiring connections are made with the AS002240 harness which is supplied with the harness is the following hardware:</p> <p>4 x 6.4mm spacers 4 x G4x19mm Bolts</p> <p>These hardware components are critical and must be used to space the daughter board above the joystick circuit board.</p>	

11.

Mount the Overwatch daughter board on top of joystick circuit board using the provided screws and spacers in the kit.

Make sure that the board is sitting in the correct position and the spring pins are contacting the joystick signal pins.

Use the cut-outs next to each spring pin to inspect that the contact is solid.

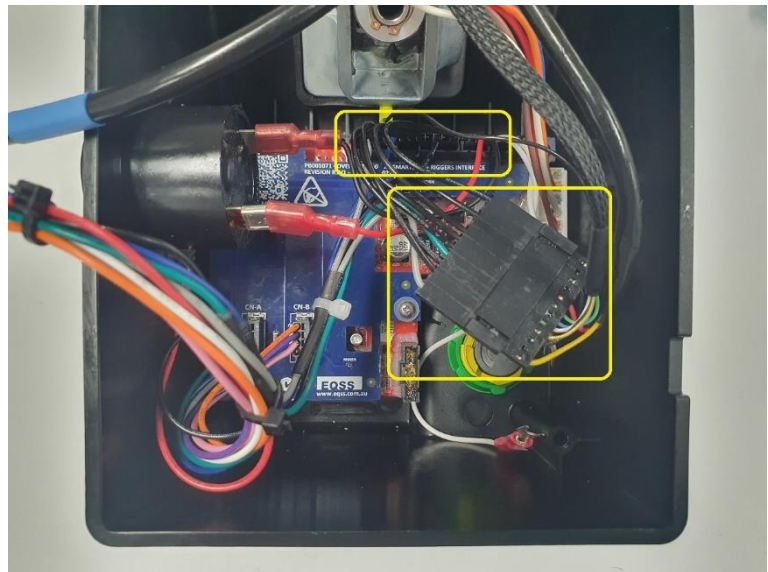


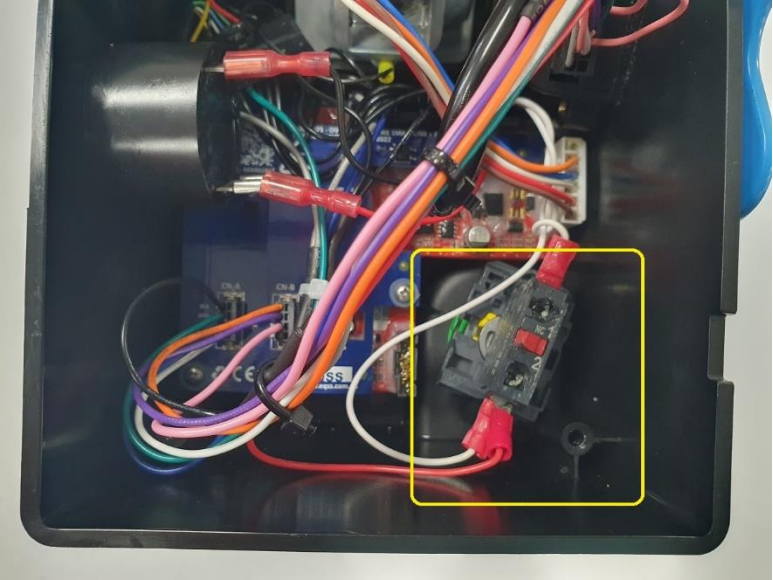
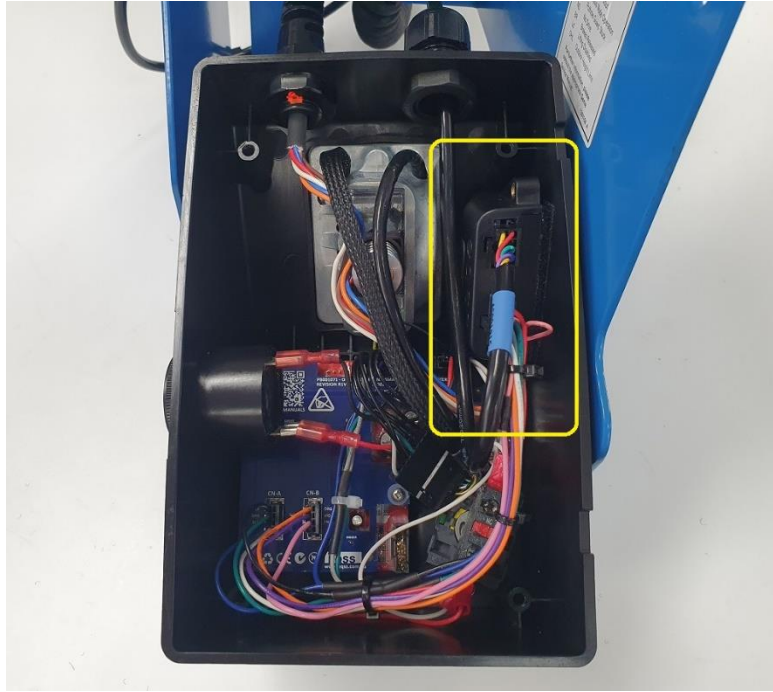
12.

Install the Overwatch connectors in between the joystick and the circuit board.

Visually check that all pins from the original joystick connector have a corresponding cable on the Overwatch harness.

Reconnect the other connectors, which were disconnected in step 1 to the control box circuit board.



<p>13.</p>	<p>At the back of the Estop, install the OverWatch Red Power cable to terminal 2 of the E-Stop. Same terminal as where the yellow wires are connected.</p> <p>Note: This cable might need to be changed to terminal 1 if the OverWatch is powered with the E-stop pushed in.</p>	
<p>14.</p>	<p>Mount the OverWatch ECU inside control box. The ECU is mounted on the right hand inside wall using the adhesive Velcro tape.</p> <p>Run the operator sensor cable through the predrilled 20mm hole and secure the cable gland.</p> <p>Connect the 8-pin connector from the operator sensor and the 12-pin connector from the overwatch loom to the ECU.</p>	

15.

Re-assemble the control box and mount to the metal shroud.

Make sure the operator sensor cable runs clear to the joystick enclosure and tighten the M20 gland to seal the cable entry point.



Post Installation Configuration

Overview

After the system has been installed it must be configured with the parameters to suit the machine. Follow the instructions below to configure the OverWatch.

Minimum system requirements

Any smart phone, tablet or laptop that meets the following requirements:

- The device can connect to a Wi-Fi access point
- The device has an up to date web browser installed. Firefox, Chrome or Safari are recommended.

Wi-Fi Connection & Web Page Access

To enable the Wi-Fi connection on the OverWatch to complete the configuration follow the steps below.

1. Power down the platform control box with the ESTOP
2. Wait 5 seconds
3. Power up the platform control box with the ESTOP
4. While standing **in front of the operator sensor**, switch on the OverWatch
5. As the welcome chime starts to play, cover the sensor. The LED will flash white then black to acknowledge.
6. Remove your hand from the sensor. The LED will flash white then black to acknowledge.
7. After covering then uncovering the sensor this way 2 more times, "Wi-Fi On" will be announced
8. On your Wi-Fi enabled device (laptop, tablet, smartphone, etc), show the available wireless networks
9. Select the wireless network (starts with "overwatch") to connect to the OverWatch
10. When prompted, enter the **password 12345678**
11. Open your preferred web browser (Chrome, Firefox, Safari)

Enter the following into the address bar <http://192.168.4.1> to open the OverWatch main page

Machine Model Selection

Follow the instructions below to configure the OverWatch.

1. Select the Setup option
2. If there is a password field at the bottom of the page, follow the instructions in Change Model Configuration to obtain the password and enter the password field
3. Select the EWP Model from the drop-down list and click Set
4. Click on Proceed to test to begin the installation test



OverWatch Setup

Genie GS-3232

Set

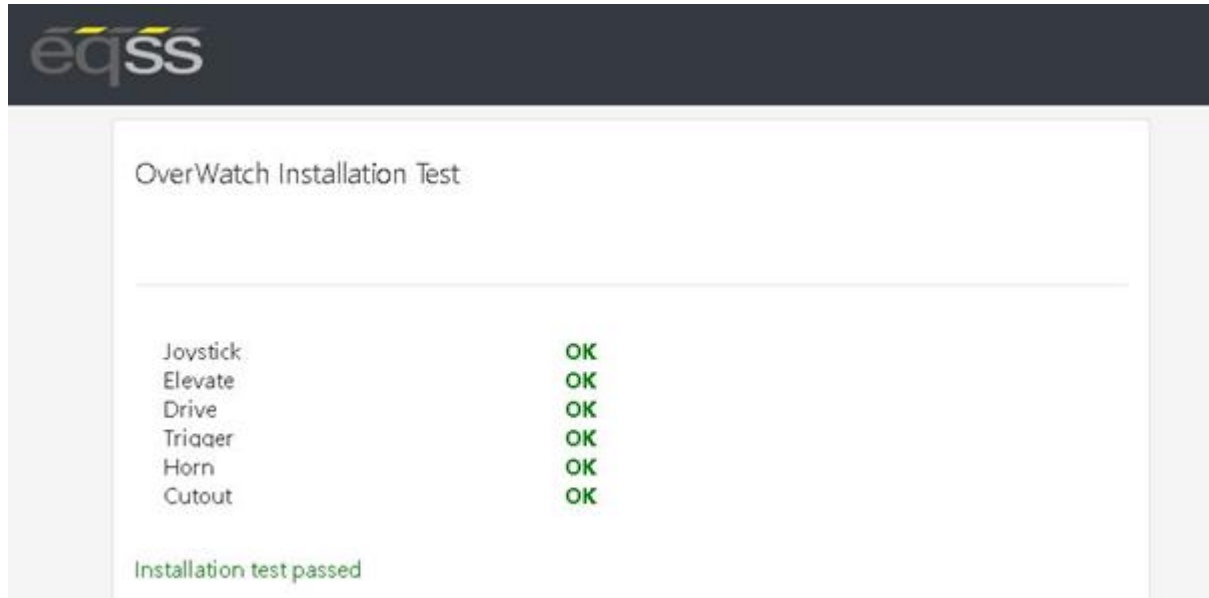
Serial number: 6253E-2001-9999

No control box set.

Proceed to test

Installation Test

After the model configuration has been set or updated an Installation Test must be performed. This will ensure the installation has been correctly performed and the OverWatch is functioning correctly. Follow the instructions on the web page to complete the Installation Test.



Change Model Configuration

To reconfigure the OverWatch for a different model requires an authorisation password. The authorisation password is generated from the EQSS website. The EQSS website requires a login username and password, contact EQSS for these details.

Follow the instructions below to obtain an authorisation password. It is important to note that each ECU has a unique serial number and a unique password.

1. Open your web and enter the following into the address bar <http://www.eqss.com.au/overwatch> to open the Login page
2. Enter your username and password
3. Enter the EUC serial number which is shown on the setup page or on the ECU serial number sticker, also enter the owner and model details of the EWP and then click Generate Hash
4. The generated Hash code or password can be used to change the model configuration.



Details

Name	John Smith
Email	john.smith@company.com
Phone	+61 9 9999 9999
EQSS Overwatch Serial Number	6253E-2004-0000
Scissor Lift Model	Genie GS-3232
Hash	50244

System Settings

Default Parameters

The OverWatch is configured with the following default parameters.

Setting Name	Description	Default
max_safe_velocity	This is the velocity threshold for the cutout in cm/s for drive mode.	105
max_safe_displacement	This is the maximum permitted distance in cm the operator may be away from the calibration position in drive mode.	60
max_safe_velocity_elevate	This is the velocity threshold for the cutout in cm/s for elevate mode.	95
max_safe_displacement_elevate	This is the maximum permitted distance in cm the operator may be away from the calibration position in elevate mode.	50
fwddispadj	The proportion of the calibration distance toward the sensor permitted to the operator.	0.7
fwdveloadj	The coefficient to apply to the maximum allowable velocity when the movement of the operator is toward the sensor.	1.0
zone_obstruction	If the lidar sensor reading is below this, the lidar is considered to be obstructed (with paint or thick coat of dust) and the system is cutout until the obstruction is cleared.	5
zone_minimum	The minimum calibration distance. If the operator is closer to the sensor than this "operator zone" will be announced.	17
zone_maximum	The maximum calibration distance. If the operator is further from the sensor than this "operator zone" will be announced.	120
adc_elevate_threshold	Threshold value for the elevate ADC input.	100
adc_drive_threshold	Threshold value for the drive ADC input.	100
adc_trigger_threshold	Threshold value for the trigger ADC input.	100
adc_joystick_fwd_threshold	Forward threshold value for the joystick ADC input.	1525
adc_joystick_bwd_threshold	Backward threshold value for the joystick ADC input.	1375
throttle_time	Period after the trigger is pressed (ms) during which initial velocity reading is computed.	500
driving_state_timeout	Mode selection switch timeout (ms)	7000

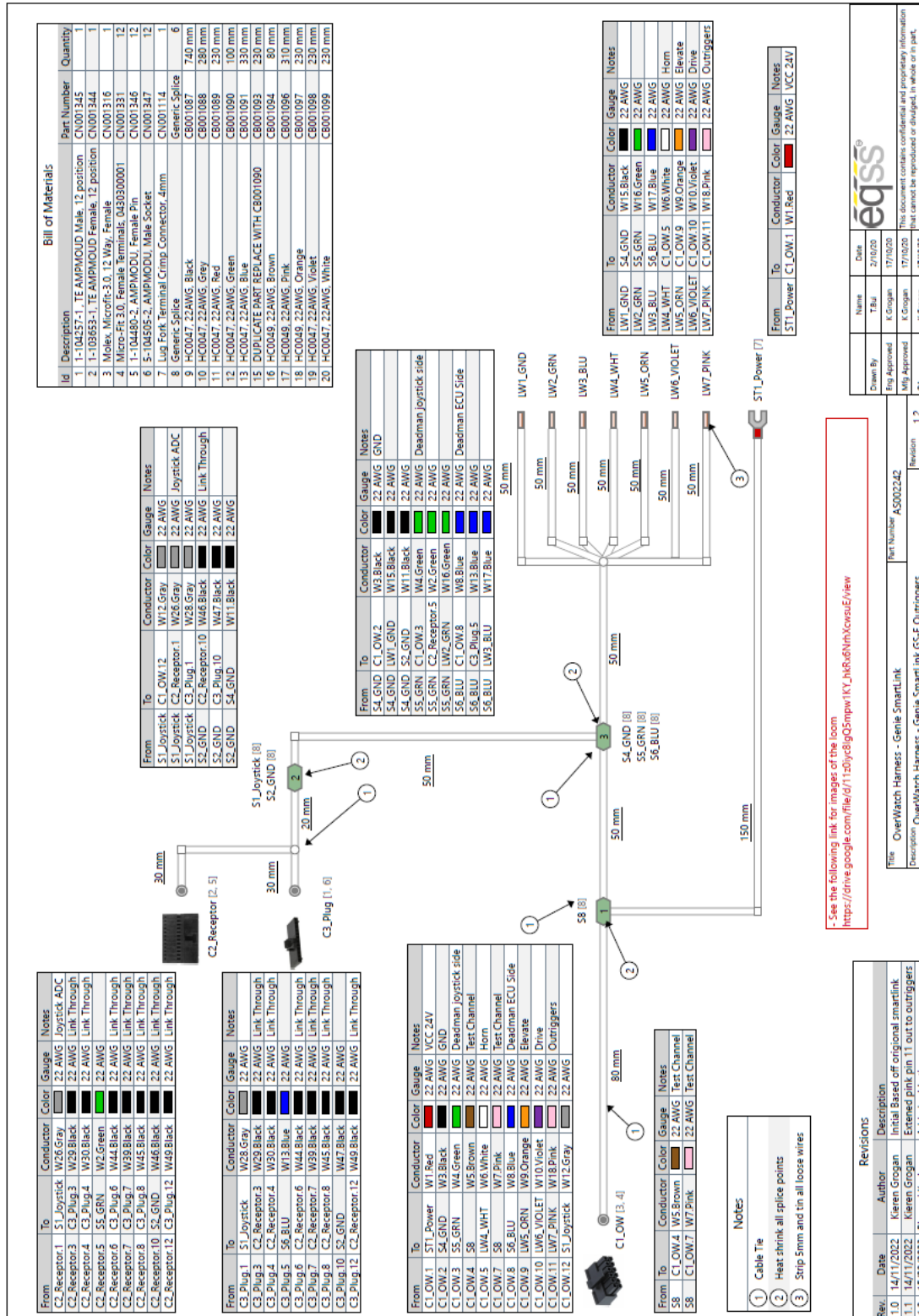


Polarity and Input Style

The table below describes each setting

Setting Name	Description	Default
joystick_drive_forward	Direction of joystick to move machine forward	forward
joystick_elevate_upward	Direction of joystick to move machine upwards	forward
elevate_polarity	Direction of signal logic	high
drive_polarity	Direction of signal logic	low
trigger_polarity	Direction of signal logic	low
joystick_polarity	Direction of signal logic	high
driving_state_input	Direct or timer based	direct

Harness Drawing AS002240





Replacement Parts

Replacement parts for this OverWatch kit are available from EQSS, for all inquiries please email sales@eqss.com.au
Shown below are the part numbers for the major components included in this model specific kit.

Part Number	Description
AS002217	OverWatch - Complete kit for Genie GS-E (Outriggers) Series Control Box
AS001910	OverWatch - Operator Sensor with M20 gland
AS001916	OverWatch – Electronic Control Unit (ECU)
AS002240	OverWatch - Genie GS-E Harness
AS002326	OverWatch - Sensor Guard V2